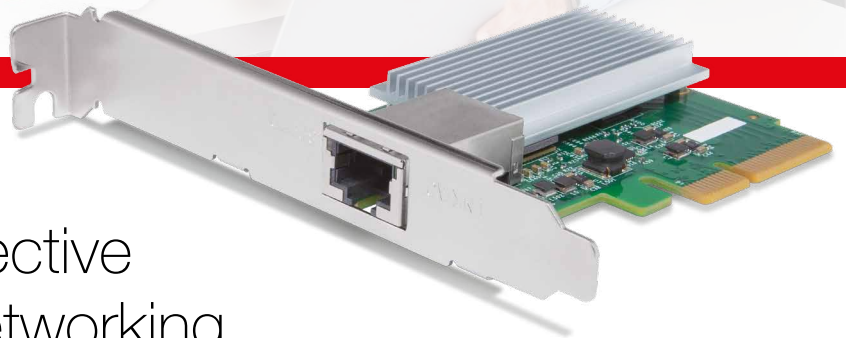


LGY-PCIE-MG

Multi Giga compliant –
10GbE PCI Express Network Card



The easy and cost effective migration to 10GbE networking

Buffalo's LGY-PCIE-MG offers easy and cost effective migration to super fast 10GbE networking. By constructing a 10 GbE environment using a desktop personal computer or server with this product added and a 10 GbE compatible NAS/switch, the transfer time of large capacity data is reduced by about 66%.

LGY-PCIE-MG is multi giga compliant, simplified with full backward compatibility of 5/2.5/1GbE, also fully compatible with Windows Server 2016/2012R2/2012. With a RJ-45 connector.

Features and Benefits

- Easy and cost effective migration to 10GbE network
- Multi giga compliant, 10 GbE, 5 GbE, 2.5 GbE, 1GbE, 100 MbE
- Low-profile slot cover inclusive
- Windows Server 2016/2012R2/2012 are also supported
- 3 years warranty



About BUFFALO

BUFFALO is a leading global provider of award-winning storage, networking and multimedia solutions for the home and small business environments as well as for system builders and integrators. With more than four decades of networking and computer peripheral experience, BUFFALO has proven its commitment to delivering innovative solutions that have put the company at the forefront of infrastructure technology.

Specifications

Product code	LGY-PCIE-MG-WR
Standards Compliance	IEEE 802.3an (10GBASE-T) IEEE 802.3bz (5GBASE-T / 2.5GBASE-T) IEEE 802.3ab (1000BASE-T) IEEE 802.3u (100BASE-TX)
Data transfer rate	10 Gbps / 5 Gbps / 2.5 Gbps / 1000 Mbps / 100 Mbps (auto recognition / fixed)
Data transmission mode	Full duplex (Automatic recognition, 10GBASE-T / 5GBASE-T / 2.5GBASE-T / 1000BASE-T / 100BASE-TX operation) Half duplex (Automatic recognition, 100 BASE - TX operation)
Transmission path encoding method	DSQ 128 (10 GBASE-T) PAM 16 (5 GBASE-T / 2.5 GBASE-T) 8 B 1 Q 4/4 D-PAM 5 (1000 BASE-T) 4B5B / MLT-3 (100BASE-TX)
Access method	CSMA / CD
Jumbo Frame	Up to 9014 Bytes (Including Header 14 Bytes + FCS 4 Bytes)
Connector type	RJ - 45 type 8pin × 1 (AUTO-MDIX compatible)
Applicable cable	10GBASE-T Category 6 A or more LAN cable (maximum 100 m) 5GBASE-T / 2.5GBASE-T / 1000BASE-T / 100BASE-TX Category 5e or more LAN cable (maximum 100 m)
Applicable equipment	PCI Express slot (for x4, x8, x16 slot) (2.0, 3.0) Windows PC
Supported OS	Windows 10 (64 bit / 32 bit) Windows 8.1 (64 bit / 32 bit) Windows 7 (64 bit / 32 bit) Windows Server 2016 (64 bit) Windows Server 2012 R2 (64 bit) Windows Server 2012 (64 bit)
Power consumption	6.1 W (maximum)
External dimensions (W x H x T)	84 x 121 x 19 mm (Including standard slot cover)
Weight	65 g (including standard slot cover)
Operating environment	0 to 55 °C, 10 to 85% (non-condensing)
Acquisition standard	CE, FCC, VCCI Class B

